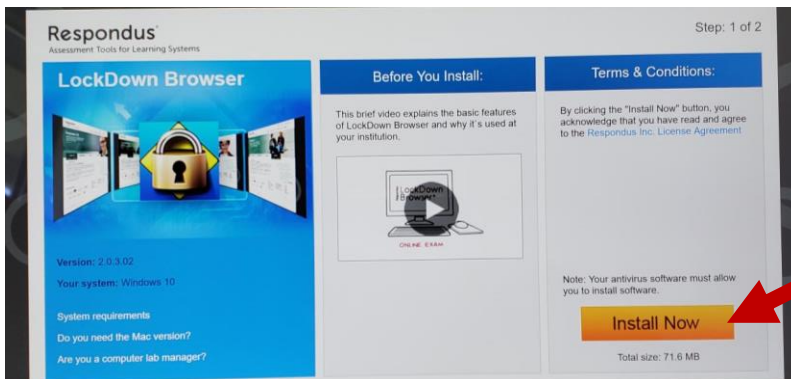
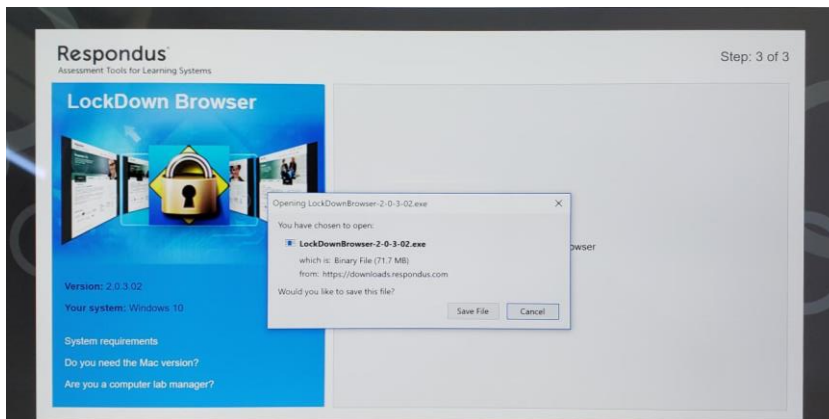


## HOW TO INSTALL RESPONDUS LOCKDOWN BROWSER ON A WINDOWS COMPUTER

1. Go to **Help & Resources** → **Student Resources** → find the link - **Click this link(unique to BC3) to download the LockDown Browser**
2. Click the **Install Now** button to begin.

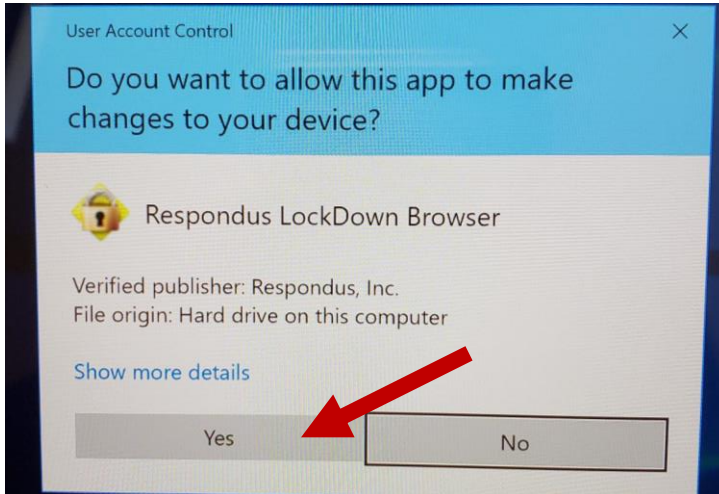


3. Choose Save File



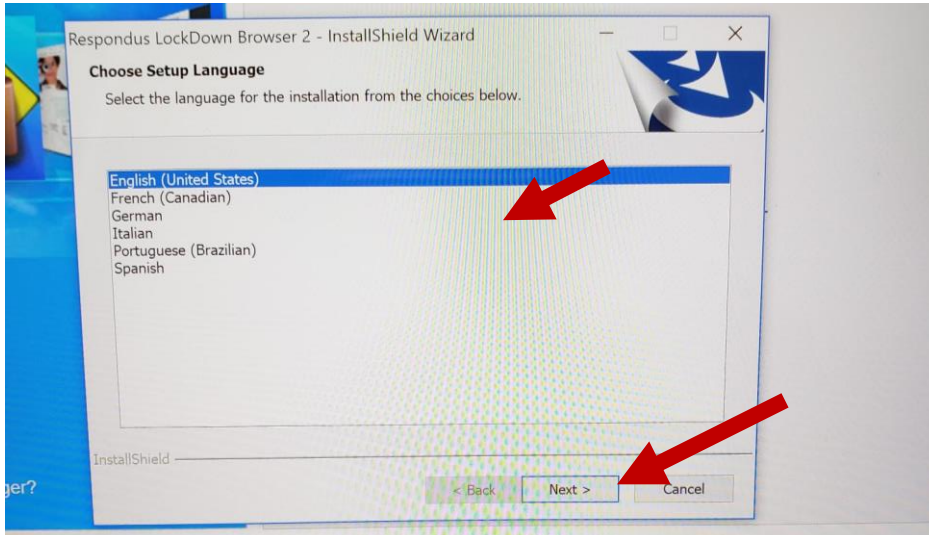
4. Depending on the browser you are using, click and run the installation.
  - a. **Internet Explorer** – click Run from the popup window
  - b. **Firefox** – find the install in downloads in the upper right area with arrow pointing down
  - c. **Chrome** - click the file in the bottom left of the window

5. Allow windows to make changes to the device.

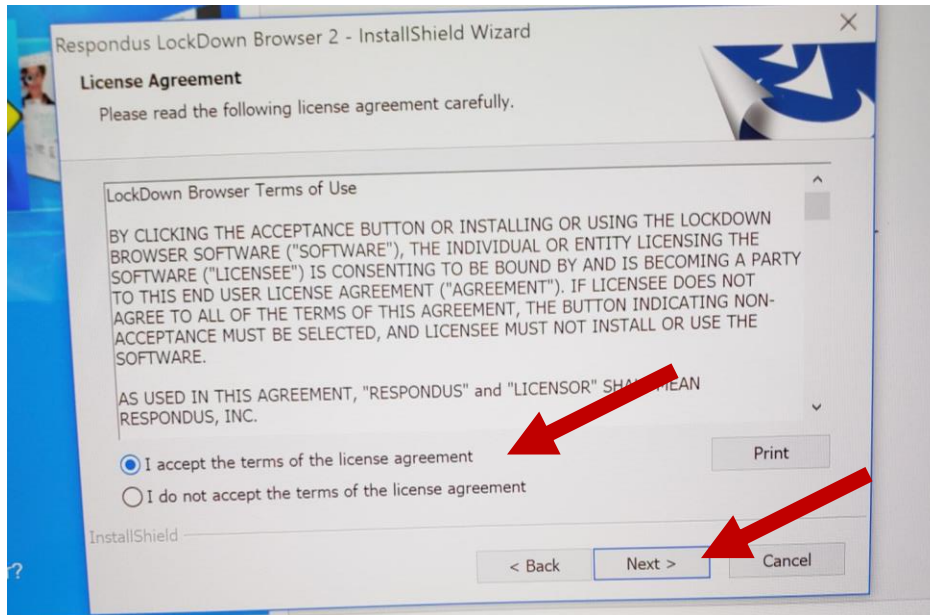


6. The software will prepare the computer for setup.

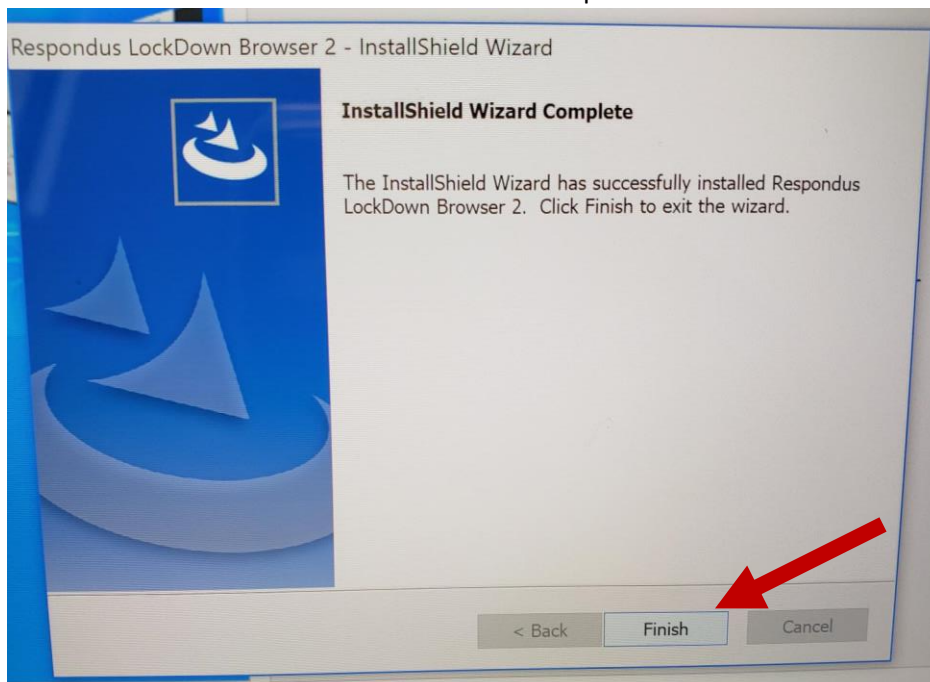
7. Choose the language from the list and click Next



8. **Accept the License Agreement** and choose **Next**.



9. Click **Finish** when the InstallShield Wizard is complete.



10. Find the Respondus Lockdown Browser icon on your desk top



**FYI:** You **ONLY** need to use the Respondus LockDown Browser when taking a test that has “Requires Respondus Lockdown Browser” in the name of the quiz or test. You **DO NOT** need to use this browser any other time.